

Pusan National University

Student  
Exchange  
Program

<https://international.pusan.ac.kr>  
[global@pusan.ac.kr](mailto:global@pusan.ac.kr)

Updated on January 2025

2025-26  
Fact Sheet



부산대학교  
PUSAN NATIONAL UNIVERSITY

# 1. Contact Information

Name of University : Pusan National University

Name of Department : PNU International Office

Inquiry	Staff Name	Contact Information
Inbound Program (Exchange/Visiting)	Ms. Jinju LEE	E-mail: <a href="mailto:global@pusan.ac.kr">global@pusan.ac.kr</a> Tel : +82-51-510-.3653
Outbound Program (Summer School)	Ms. Youyoung PARK	E-mail : <a href="mailto:abroad@pusan.ac.kr">abroad@pusan.ac.kr</a> Tel : +82-51-510-3651
MOU	Ms. Haneul JEONG	E-mail: <a href="mailto:exchange@pusan.ac.kr">exchange@pusan.ac.kr</a> Tel : +82-51-510-3623
Course Registration Buddy Program	Ms. Ahyun PARK	E-mail: <a href="mailto:foreign@pusan.ac.kr">foreign@pusan.ac.kr</a> Tel : +82-51-510-3839
Visa	Ms. Hyejung YANG	E-mail: <a href="mailto:visa@pusan.ac.kr">visa@pusan.ac.kr</a> Tel : +82-51-510-3353
Dormitory	Ms. Eunjung CHOI	E-mail: <a href="mailto:idorm@pusan.ac.kr">idorm@pusan.ac.kr</a> Tel : +82-51-510-3881
Insurance	Ms. Jungsun OH	E-mail: <a href="mailto:insurance@pusan.ac.kr">insurance@pusan.ac.kr</a> Tel : +82-51-510-3882

## Mailing Address

Pusan National University, PNU International  
1F, 92 Geumgang-ro, 279 Beon-gil, Geumjeong-gu,  
Busan, Republic of Korea (postal code: 46287)

## Website:

<https://International.pusan.ac.kr>

# 2. Academic Information

## Academic Calendar

Semester	Lecture Period	Exam Period	Orientation Days	Break
Fall	Sep. 1 – Late Dec.	Mid term : Late Oct. Finals : Late Dec.	1st Week of Sep.	Late Dec - Feb (following year)
Spring	Mar. 2 – Late Jun.	Midterm: Late Apr. Finals: Late Jun.	1st Week of Mar.	Late Jun – Aug

## 3. Nomination and Application Process

### Deadlines

Activity	By	Fall Semester	Spring Semester
Nomination Deadline	Home University	April 20 <sup>th</sup> (same year)	October 20 <sup>th</sup> (previous year)
Application Deadline	Student	April 30 <sup>th</sup> (same year)	October 30 <sup>th</sup> (previous year)

### Language and GPA Requirement

**GPA:** No minimum requirements; academic performance considered during screening.

**Language Proficiency:** Fluency in either English or Korean required to understand courses.  
No test result required.

### Nomination procedure

Coordinators at home universities must create a new account for each semester and nominate students via PNU Nomination Website.

<https://sep.pusan.ac.kr/inbound/exchange/manager>

- \* After nomination, PNU will send the application guidelines via e-mail to the nominated students.
- \* Any error in the student's account information can only be revised by the home university coordinator.

### Application procedure

Students must be nominated by their home university's International Office before starting the online application.

Students must log in using their e-mail and date of birth at PNU Application Website.

<https://sep.pusan.ac.kr/inbound/exchange/login>

<b>ID</b>	Student's e-mail address registered during the nomination
<b>PW</b>	Student's date of birth 8 digits (YYYYMMDD)

### Acceptance Result

Students will be notified via e-mail of the results.

**Fall semester:** Mid June of the year of study

**Spring semester:** Mid December of the previous year of study

### Pre Arrival Guideline

More detailed information about study abroad at PNU will be sent out via email.

**Fall semester:** Late June of the year of study

**Spring semester:** Late December of the previous year of study

## 4. Required Documents

### A. Documents ※ All submitted documents must be in English

No.	Document	OECD Nationality	Non-OECD Nationality	Notes
1	Photo	Online Upload Only		Passport-sized: 3.5cm*4.5cm
2	Valid passport	Online Upload Only		Photo page
3	Study plan	Online Upload Only		Form attached
4	Copy of transcript	Online Upload Only		
5	Certificate of Enrollment	Online Upload Only	Must send original <b>via post</b> (apostille required)	
6	Official Bank Statement (Your Own Account)	Online Upload Only	Must send original <b>via post</b>	For one semester: <b>KRW 4,600,000</b> For two semesters: <b>KRW 11,500,000</b>

### <For Non-OECD Nationality Students>

\* Non-OECD nationality students require **Apostille or Authentication**.

- Apostille\* or Authentication issued by the Korean Embassy or Consulate in your home university country
- Chinese Nationality Students who study in China→Certification from CHSI website(学信网)
- Chinese Nationality Students Who study outside of China→Authentication issued by the Korean Embassy or Consulate

\* **Apostille Country List**

<https://www.gscca.org/notary-and-apostilles/apostilles/hague-apostille-country-list>

### B. Important Notes for Document Submission

#### 1) Required Amount for the Bank Statement

→ The bank statement amount increases each year on January 1st, according to Ministry of Justice guidelines. **For spring semester applicants**, please submit an **additional KRW 300,000** to meet the updated requirement.

## 2) If the Bank Statement is Not in Your Name

→ If the bank statement is under someone else's (parents) name, you must also submit the following documents **via post**

- 1) Affidavit of Financial Support (Form attached)
- 2) Official Family Certificate

→ Can be substituted with a scholarship certificate

## 3) Document Submission

→ Always ensure that **all submitted documents are in English** or are accompanied by a certified translation. This is crucial to avoid delays in the verification process and ensures your application proceeds smoothly.

# 5. Academic Information

## Course Load

Program	Minimum Credit	Maximum Credit
Undergraduate	12	19 ( 21 for Engineering & specific majors*)
Graduate	3	10 ( 12 with departmental permission)

### \* specific majors :

- College of Education
- College of Nanoscience and Nanotechnology
- College of Information and Biomedical Engineering(Including School of Computer Science and Engineering)

## Language of Instruction

English: Approximately 350-360 courses taught in English are offered each semester.

<https://onestop.pusan.ac.kr/page?menuCD=00000000000335>(select English in "Courses in foreign languages")

## Course Search & Syllabus

**Check the list of classes for the same semester** of the previous year; please note that the offered courses are subject to revision.

**For Fall 2025 students** → Check Fall Semester 2024.

**For Spring 2026 students** → Check Spring Semester 2025.

**Course registration** is conducted **online** and follows a **first-come, first-served** basis. Students can register for courses offered by other departments **within the quota** allocated for non-major students. Details can be found in the course registration guideline(TBA)

## Credit Conversion

1 credit = 15 teaching hours

## Grading System

A+=4.5(100~95), A0=4.0(94~90)

B+=3.5(89~85), B0=3.0(84~80)

C+=2.5(79~75), C0=2.0(74~70)

D+=1.5(69~65), D0=1.0(64~60)

P=Pass, F0=Fail, N=Non Pass, S=Satisfactory, U=Unsatisfactory

## 6. Recommended Departments(Major)

See the last page for all departments; some may not offer courses in English

Division	Department	Notes
Undergraduate	Global Studies* (DGS)	(Website) <a href="https://pnudgs.com">https://pnudgs.com</a> (Course list) <a href="https://pnudgs.com/page/03_02.php">https://pnudgs.com/page/03_02.php</a>
Undergraduate & Graduate	Business Administration	(Website) <a href="https://biz.pusan.ac.kr/biz/index.do">https://biz.pusan.ac.kr/biz/index.do</a> (Course list) <a href="https://his.pusan.ac.kr/bizeng/14393/subview.do">https://his.pusan.ac.kr/bizeng/14393/subview.do</a>
Undergraduate & Graduate	Mechanical Engineering	(Website) <a href="https://me.pusan.ac.kr/new/eng/main/index.asp">https://me.pusan.ac.kr/new/eng/main/index.asp</a> (Course list) <a href="https://me.pusan.ac.kr/new/eng/sub02/sub02_01.asp">https://me.pusan.ac.kr/new/eng/sub02/sub02_01.asp</a>
Graduate	Graduate School of International Studies (GSIS)	(Website) <a href="https://gsis.pusan.ac.kr/gsis/index.do">https://gsis.pusan.ac.kr/gsis/index.do</a> (Course list) <a href="https://gsis.pusan.ac.kr/gsiseng/52053/subview.do">https://gsis.pusan.ac.kr/gsiseng/52053/subview.do</a>

**\*The Department of Global Studies (DGS) offers a challenging, interdisciplinary curriculum taught entirely in English and almost exclusively by native English speakers. Included in the curriculum are courses in law, international relations, history, economics, political science, human rights, culture, business, art, regional studies, and religion.**

## 7. Special Programs and Support

### Buddy Program

Automatic pairing with a PNU student for support with course registration and campus life.

### Summer School Program

Cultural and educational courses during summer break.

<https://international.pusan.ac.kr/international/14768/subview.do>

			
Taekwondo	Bibimbap Cooking	Haeundae Sightseeing	Korean Calligraphy

### Korean Language Program at PNU LEI

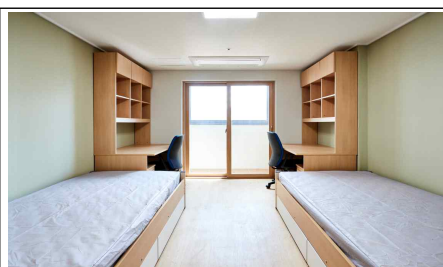
A program designed for students who want to focus on learning Korean in reading, writing, speaking, and listening, while also experiencing Korean cultural activities, including field trips.

Category	Details
Website	<a href="https://lei.pusan.ac.kr/leieng/56420/subview.do">https://lei.pusan.ac.kr/leieng/56420/subview.do</a>
Schedule	Monday to Friday, 9:00 AM - 12:50 PM, for 10 weeks
Cost	1,400,000 KRW (30% discount available for exchange students)
Inquiries	Email: <a href="mailto:interedu@pusan.ac.kr">interedu@pusan.ac.kr</a>

## 8. Accommodation

### Dormitory

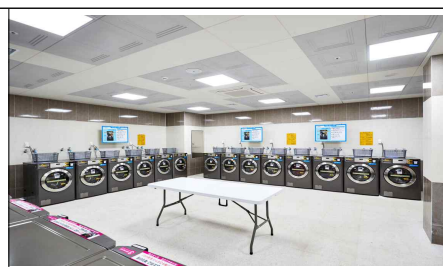
Category	Details
Website	<a href="https://dorm.pusan.ac.kr">https://dorm.pusan.ac.kr</a>
Room Types	<ul style="list-style-type: none"> <li>- Twin Room: 2 people per room (private bathroom)</li> <li>- Single Room: Male only (shared bathroom)</li> </ul>
Facilities	<ul style="list-style-type: none"> <li>- In-room: Beds, desks, chairs, closets, bookshelves, fire extinguisher, shower booth, toilet (Twin rooms)</li> <li>- Note: No bedding provided (only mattress and bed sheet)</li> <li>- Shared: Cafeteria, laundry room, gym, study room, convenience room, etc.</li> </ul>
Dormitory Fees	<ul style="list-style-type: none"> <li>- Twin Room: \$1,200 ~ \$1,450 (approx.)</li> <li>- Single Room: \$1,150 ~ \$1,600 (approx.)</li> </ul> Includes meals; per semester (16 weeks)
Application Period	<ul style="list-style-type: none"> <li>- Fall semester: First week of July</li> <li>- Spring semester: First week of January</li> </ul>
Requirements	<ul style="list-style-type: none"> <li>- Tuberculosis test results</li> <li>- Measles vaccination certificates</li> </ul>
Application Details	Included in the Pre-Arrival Guide(TBA)
Inquiries	Email: <a href="mailto:idorm@pusan.ac.kr">idorm@pusan.ac.kr</a>



Room  
(Double Occupancy)



Cafeteria



Laundry Room

### Off-Campus Housing

Students are responsible for finding and contracting off-campus housing on their own.

Single Room with Kitchen & Bathroom:

Cost: Approx. 350,000 KRW per month

Deposit: Approx. 5,000,000 KRW



## 9. Visa & Insurance

### Visa

#### D-2-6 Visa

All students are responsible for applying for an exchange student visa (D-2-6) by submitting the Certificate of Admission to the Korean Consulate in their home country.




### Insurance

All exchange students must have insurance during their stay in Korea. They are required to enroll in both the NHIS (National Health Insurance Service) for monthly payments and private insurance (either PNU Group Insurance or individually arranged insurance).

## 10. Living Cost in Busan

Category	Item	Approximate Cost(KRW)	Remarks
School	Dormitory Fee	1,746,800	3 meals a day included
	Books & Supplies	200,000	Differs depending on the departments
Transportation	Subway	1,600~1,800	
	Bus	1,700~2,600	
	Taxi	4,800	Basic fare
Food	Campus Cafeteria	4,000	
	Restaurants	8,000~	
Communication	USIM	17,000~	
	Wifi		Free on campus

## 11. PNU Campuses (Busan, Yangsan, Miryang)

		
<b>Busan Campus</b>	<b>Yangsan Campus</b>	<b>Miryang Campus</b>
Main Campus	<b>1h 30 mins</b> by <b>subway</b> from Busan Campus	<b>2hours 30mins</b> from Busan Campus by <b>public</b> <b>transportation</b>

Your **campus** is **determined by your major**. Most majors are located at Jangjeon Campus (Busan), but some are at Yangsan or Miryang Campuses. Check the department list on the last page for details. **Dormitory assignments** are **based on your campus location**.

## 12. Notes

- A. Submitted documents will not be returned.
- B. All application-related notifications, including the announcement of successful candidates, will be sent via email. Ensure your email address is accurate and regularly monitored.
- C. Applicants are responsible for:
  - Submitting all required documents.
  - Ensuring documents are complete and accurate.
  - Meeting all requirements as outlined in the application guidelines.
  - Responding promptly to correspondence from PNU International.
  - Completing procedures necessary for entry into Korea.
  - Informing PNU International of attendance upon acceptance.
- D. Admission will be revoked if obtained through fraudulent means, such as document forgery or misrepresentation. This applies even after enrollment or graduation.
- E. Any matters not covered in these guidelines will follow the admissions procedures and regulations of Pusan National University.

## 13. List of Departments

College	Department/School/Major	Campus
<b>NOT Open to Exchange Students</b>	<b>Dentistry, Medicine, Korean Medicine, Nursing, Law</b>	
College of Humanities	Department of Korean Language and Literature	Busan
	Department of Chinese Language and Literature	Busan
	Department of Japanese Language and Literature	Busan
	Department of English Language and Literature	Busan
	Department of French Language and Literature	Busan
	Department of German Language and Literature	Busan
	Department of Russian Language and Literature	Busan
	Department of Korean Literature in Chinese Characters	Busan
	Department of Language and Information	Busan
	Department of History	Busan
	Department of Philosophy	Busan
	Department of Archaeology	Busan
Department of Korean Language Education as a Foreign Language	Busan	
College of Social Sciences	Department of Public Administration	Busan
	Department of Political Science and Diplomacy	Busan
	Department of Social Welfare	Busan
	Department of Sociology	Busan
	Department of Psychology	Busan
	Department of Library	Busan
	Archive and Information Studies	Busan
	Department of Media & Communication	Busan
College of Economics and International Trade	Department of Public Administration	Busan
	Department of Political Science and Diplomacy	Busan
	Department of Social Welfare	Busan
	Department of Sociology	Busan
	Department of Psychology	Busan
	Department of Library	Busan
	Archive and Information Studies	Busan
	Department of Media & Communication	Busan
College of Natural Sciences	Department of Mathematics	Busan
	Department of Statistics	Busan
	Department of Physics	Busan
	Department of Chemistry	Busan
	Department of Biological Sciences	Busan
	Department of Microbiology	Busan
	Department of Molecular Biology	Busan
	Department of Geological Sciences	Busan
	Department of Atmospheric Environmental Sciences	Busan
	Department of Oceanography	Busan

College	Department/School/Major	Campus
College of Engineering	School of Mechanical Engineering	Busan
	Department of Polymer Science and Engineering	Busan
	Department of Organic Material Science and Engineering	Busan
	School of Chemical Bimolecular Engineering & Environmental Engineering : Chemical and Bimolecular Engineering Major, Environmental Engineering Major	Busan
	School of Materials Science and Engineering	Busan
	Department of Electronics Engineering	Busan
	Department of Electrical Engineering	Busan
	School of Urban, Architecture, and Civil Engineering : Architectural Engineering Major, Architecture Major, Urban Engineering Major, Civil Engineering Major	Busan
College of Information and Bio-Medical Engineering	Computer Science and Engineering	Busan
	Biomedical Convergence Engineering	Yangsan
College of Education	Korean Language Education	Busan
	English Language Education	Busan
	German Language Education	Busan
	French Language Education	Busan
School of Business	Department of Business Administration	Busan
College of Human Ecology	Department of Child Development and Family Studies.	Busan
	Department of Clothing and Textiles	Busan
	Department of Food Science and Nutrition	Busan
	Department of Interior and Environmental Design	Busan
	Department of Sports Science	Busan
College of Nanoscience and Technology	Department of Nanoenergy Engineering	Miryang
	Department of Nanomechatronics Engineering	Miryang
	Department of Optics and Mechatronics Engineering	Miryang
College of Arts	Department of Music : Vocal Music, Piano, Composition	Busan
	Department of Fine Arts: Carving & Modeling, Korean Painting, Western Painting	Busan
	Department of Plastic Arts : Wooden Furniture Painting, Ceramics, Textiles & Metal	Busan
	Department of Korean Music : String-Vocal, Wind-Percussion, Theory-Composition	Busan
	Department of Dance : Korean Dance, Ballet, Modern Dance	Busan
	Department of Design : : Visual Design, Animation, Design & Technology	Busan
	Department of Art Culture and Image	Busan
College of Natural Resources and Life Science	Plant Bioscience	Miryang
	Horticultural Bioscience	Miryang
	Animal Science	Miryang
	Food Science and Technology	Miryang
	Life science and Environmental biochemistry	Miryang
	Biomaterials Science	Miryang
	Bio-Industrial Machinery Engineering	Miryang
	Landscape Architecture	Miryang
	Food and Resource Economics	Miryang
	Applied IT Science	Miryang
	Bioenvironmental Energy	Miryang
Graduate School of International Studies	International Logistics & Port Management	Busan
	International and Area Studies	Busan
	International Trade	Busan
	Korean Studies	Busan